



Toolkit

User Manual



Click here to access an up-to-date online version
of this document. You will also find the most recent content as well as expandable illustrations, easier navigation, and search capability.

Contents

1	Getting Started with Toolkit	5
	System requirements	6
	Download and install Toolkit	6
	Open Toolkit	7
2	Navigation	8
	Home screen	8
	Previous versions of Toolkit	10
3	Mirror Activity	11
	Mirror folder locations	11
	Create a mirror plan	11
	• Quick setup	12
	• Custom setup	12
	• Adding files to mirror folders	12
	Pause/resume a mirror plan	12
	View computer folder contents	13
	View drive folder contents	13
	Edit a mirror plan	13
	Delete a mirror plan	14
	View report	14
	Previous Toolkit versions (Windows 7 8 8.1)	14
	Toolkit Mirror FAQ	14
4	Backup Activity (Windows Only)	15
	File types and procedure	15
	• Locating backed up files	15
	• Viewing archived files	16
	Set up a quick backup	16
	Create a custom backup plan	16
	Define your backup plan	16
	• Step 1: Select content	17
	• Basic	17
	• Advanced	17
	• Step 2: Select the destination drive	18
	• Step 3: Schedule backups	18
	Pause/resume a backup plan	18
	Edit a backup plan	18
	Delete a backup plan	19
	View report	19
	Previous Toolkit versions (Windows 7 8 8.1)	19

Toolkit Backup FAQ	19
5 Restore Activity (Windows Only)	20
6 Sync Plus Activity	21
Set up a quick sync	21
Create a custom Sync Plus plan	22
Pause/resume a Sync Plus plan	23
View synced folders and archive	23
Edit a Sync Plus plan	23
Restore files	24
Delete a Sync Plus plan	24
Files and folders excluded from syncing	24
Previous Toolkit versions (Windows 7 8 8.1)	24
7 Seagate Secure	25
Enable security with Toolkit	25
• Optional password reset key setup	27
Unlock the drive	27
• Entering your password with Toolkit	27
• Entering your password with the Unlock Drive app	28
• Exceeding the maximum number of failed password attempts	28
Lock the drive	28
Change your password	29
Set up a password reset key	29
• Requirements	29
• Password reset key setup after security is enabled	30
Use a password reset key	31
Trusted computers	31
• Removing trusted computer status	32
Multi-user access	32
• Editing the second user	34
• Disabling the second user	34
• Deleting the second user	35
Disable security	35
Re-enable security	35
Crypto-erase the drive	36
Reset the drive to factory settings	36
Previous Toolkit versions (Windows 7 8 8.1)	37
8 RAID Setup	38
RAID explained	38
• RAID and data security	39
Setting RAID level and formatting with Toolkit	39

9	RGB and Status LED Management	41
	Disable/enable the status LED	41
	Edit RGB illumination patterns	42
	• Access RGB activity	42
	• RGB illumination settings	42
	• Razer Chroma via Razer Synapse 3 app (Windows only)	42
	• Requirements for Razer Chroma	43
	• Use Razer Chroma	43
	• FireCuda RGB app	43
	• Edit LED settings	43
	• Select a pattern	44
	• Select an animation	44
	• Preview selected pattern/animation	46
	• Timing controls	47
	• Change colors	47
	• Single color preset animations	47
	• Single color and rainbow custom animations	48
	• Change global settings	49
10	Drive Status	50
	Drive failed	50
	Drive full	50
	Drive locked	50
	Drive unlocked	51
	No readable volumes	51
	Read only	51
	Security lockout	52
	Storage pool device	52
	Time Machine	52
11	Settings	53
	Toolkit app settings	53
	Import settings	53
	Toolkit updates	54
	About	54

Getting Started with Toolkit

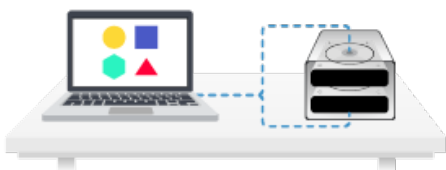
Toolkit helps you get the most out of your storage solution with easy-to-use tools for backing up your files, managing security, and much more. Toolkit activities and features include:



Protecting your data with automated backups. Create folders on your drive that mirror folders on your computer, so your files are always available in both places.



Managing security for Seagate and LaCie self-encrypting drives. Use Toolkit to enable security, create a password, and rest easy knowing your data is protected with Seagate Secure AES 256-bit encryption technology.



Setting up RAID. Toolkit helps you easily configure the initial RAID level and formatting for compatible Seagate and LaCie dual-drive devices.



Quickly importing files from memory cards. Simply insert a memory card into the drive's integrated card reader and Toolkit automatically copies your files to the drive—no need to open folders and drag files.



Some Toolkit activities and features are available only for supported Seagate and LaCie drives. See the chapters in this user manual to learn more about the drives supported by a given activity or feature.

System requirements

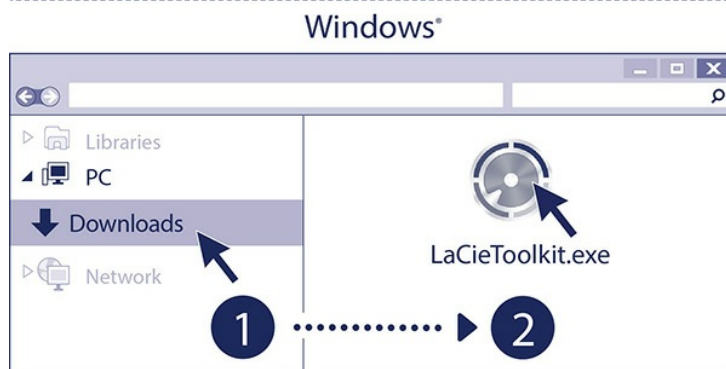
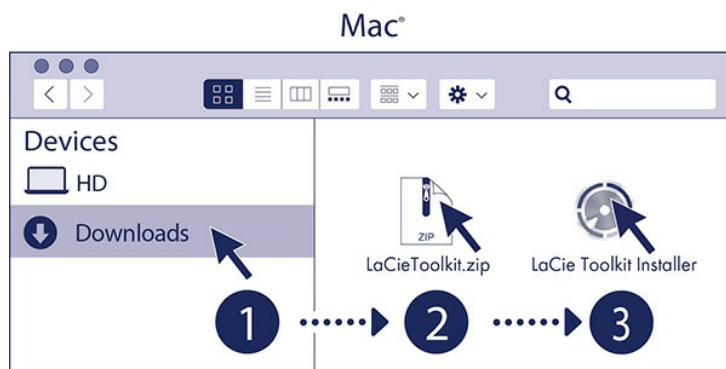
Go to [Operating System Requirements for Seagate Hardware & Software](#).

Download and install Toolkit



Your computer must be connected to the internet to install and run Toolkit.

1. Click to open the [LaCie Toolkit Support page](#).
2. Scroll down to the Downloads section.
 - **Mac**—Click on the [LaCie Toolkit for macOS](#) link.
 - **Windows**—Click on the [LaCie Toolkit for Windows](#) link.
3. Using a file manager such as Finder or File Explorer, go to the folder where you receive downloads.



- **Mac**—Open the [LaCieToolkit.zip](#) file. Click on the [LaCie Toolkit Installer](#) to launch the application.
- **Windows**—Click on the [LaCieToolkit.exe](#) file to launch the application.

Open Toolkit

Open Toolkit using any of the following methods:



Mac

- Click in the Spotlight bar and type **Toolkit**, then select the app.
- Using Finder, open your Applications folder and double-click **Toolkit**.



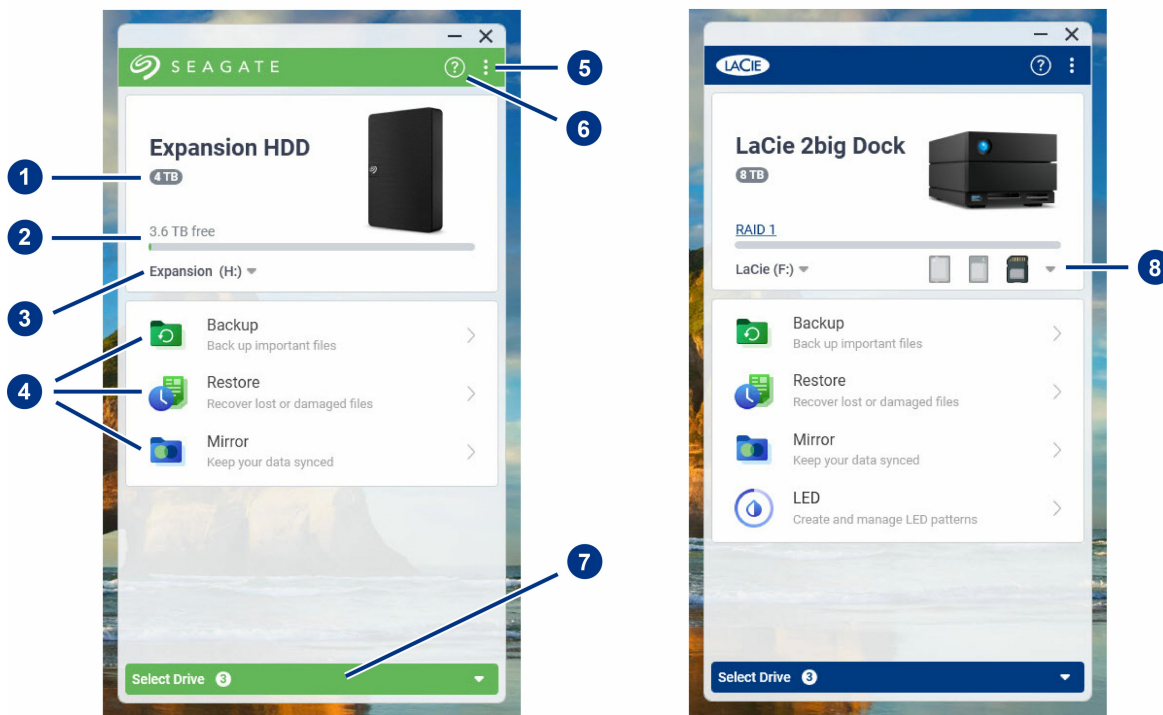
Windows

- Double-click the Toolkit icon on your desktop. For easy access, you can add the Toolkit icon to your taskbar.
- Click in the Search Windows bar and type **Toolkit**, then select the app.
- Click on the Start menu and select **Toolkit** from the menu.

Navigation

Home screen

Use the Home screen to view the drive's status, set up Toolkit activities, safely eject volumes, and more.

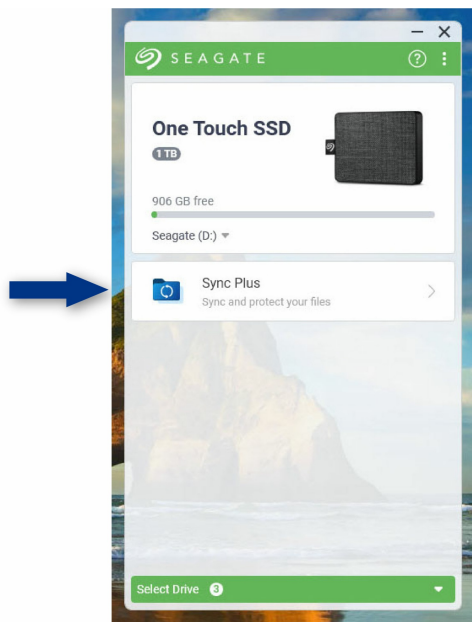


1. **Drive capacity**—View the drive's storage capacity.
2. **Available capacity**—View the amount of storage capacity available.
3. **View volumes/eject**—View volumes on the drive/safely eject volumes.
4. **Activities**—Click to set up or edit an activity.
5. **More**—Click on the icon to change settings or quit Toolkit.
6. **Help**—Click on the icon to get help with your drive.
7. **Select drive**—Click to select another drive (when multiple drives are connected).
8. **View storage cards/eject**—(Devices with card slots only) Click to view information on inserted storage cards/safely eject storage cards.

Your Seagate or LaCie model determines which activities appear in Toolkit. Depending on your drive, you may see the following activities (as shown in the image above):

- [Mirror](#)
- [Backup \(Windows only\)](#)
- [Restore \(Windows only\)](#)

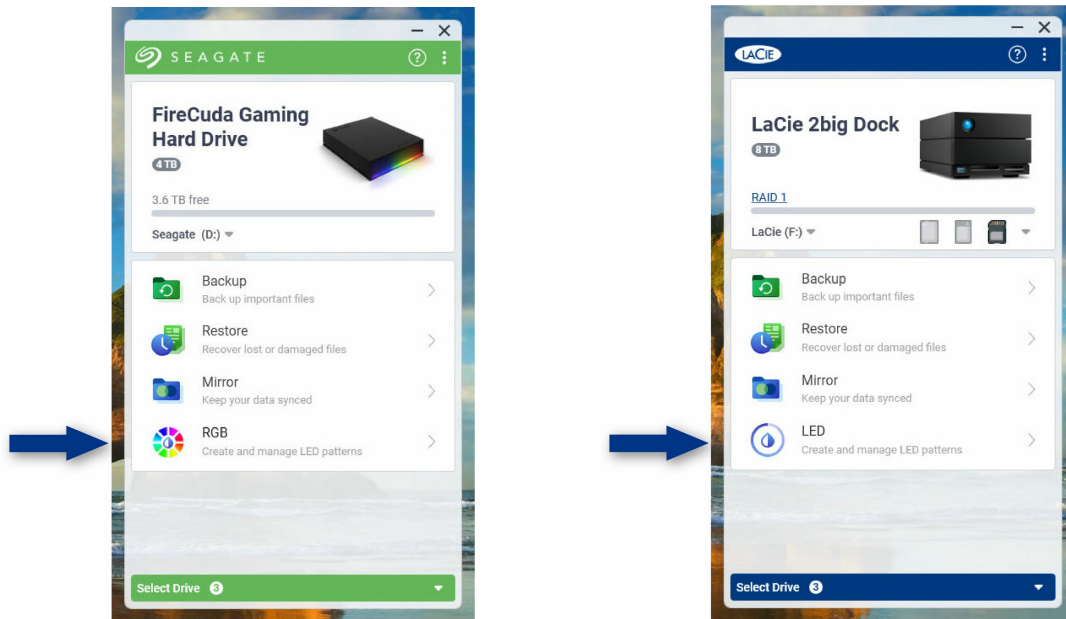
Some Seagate and LaCie models support [Sync Plus](#) instead of Backup/Restore/Mirror:



Seagate and LaCie self-encrypting drives (SED) also include the [Seagate Secure](#) activity:

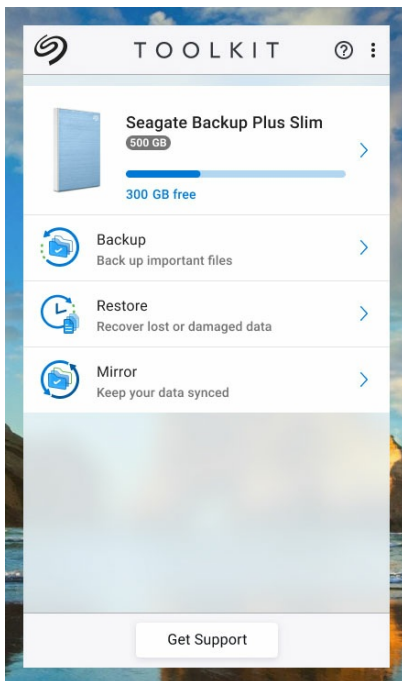


Drives with customizable LEDs include the [RGB or LED](#) activity:



Previous versions of Toolkit

If you installed Toolkit previously and the app has not been updated recently, your Home screen may look different.



Go to an activity chapter in this manual for more details on managing activities using the current and previous versions of Toolkit.

Mirror Activity

The Mirror activity lets you create a Mirror folder on your PC or Mac that is synced to your storage device. Whenever you add, edit, or delete files in one folder, Toolkit automatically updates the other folder with your changes.



The instructions provided here are intended for users with the most recent version of Toolkit. The user interface for earlier versions of toolkit may differ slightly. See [Previous Toolkit versions \(Windows 7 | 8 | 8.1\)](#).

Mirror folder locations

When setting up mirror folders, you can specify the location of the mirror folder on your PC or Mac. If a location is not specified, the mirror folder is placed at the root of the user folder.

Toolkit creates a corresponding mirror folder on your external drive. On Windows PCs, the mirror folder is located at:

X:\Toolkit\Mirror



X indicates the drive letter assigned to your external drive by your computer. Your drive letter may be different and may change depending on the number of drives connected to your computer.

Toolkit creates the mirror folder at the following location:

Name\Toolkit\Mirror



Name indicates the name assigned to the external drive.

Create a mirror plan

Quick setup

Toolkit can quickly set up a mirror folder in your computer's user folder.

1. Open Toolkit.
2. On the Main Menu, click on the [Mirror](#) activity.
3. Click [Mirror Now](#).

Toolkit performs the following actions:

- Adds a folder named "Mirror" in your user folder on the computer.
- Adds a folder named "Mirror" to your storage device. The default location is in the Toolkit folder.

Custom setup

A custom setup lets you choose the location of the mirror folder on your computer.

1. Open Toolkit.
2. On the Main Menu, click on the [Mirror](#) activity.
3. Click [Custom](#).
4. Select a location on your computer for the mirror folder.
5. Click [Create](#).

Toolkit performs the following actions:

- Adds a folder named "Mirror" to the selected location on your computer.
- Adds a folder named "Mirror" to your storage device. The default location is in the Toolkit folder.

Adding files to mirror folders

To add content, drag files to either Mirror folder. Whenever you add, edit, or delete files in one Mirror folder, Toolkit automatically updates the other Mirror folder with your changes.



The Mirror folders must each be named "Mirror" in order to sync. Do not rename the folders.

Pause/resume a mirror plan

To pause the mirror plan:

1. Open Toolkit.
2. On the Main Menu, click on the Pause icon on the [Mirror](#) activity.

Alternatively, you can click on the [Mirror](#) activity to go to the Mirror screen, and then click [Pause](#).

To resume the mirror plan:

1. Open Toolkit.
2. On the Main Menu, click on the Play icon on the [Mirror](#) activity.

Alternatively, you can click on the [Mirror](#) activity to go to the Mirror screen, and then click [Resume](#).

View computer folder contents

You can view the contents of the Mirror folder on your computer:

1. Open Toolkit.
2. On the Main Menu, click on the [Mirror](#) activity.
3. On the Mirror screen, click [View computer folder](#).

Toolkit opens a file browser window where you can view the files in the folder.

View drive folder contents

You can view the contents of the Mirror folder on your backup drive:

1. Open Toolkit.
2. On the Main Menu, click on the [Mirror](#) activity.
3. On the Mirror screen, click [View drive folder](#).

Toolkit opens a file browser window where you can view the files in the folder.

Edit a mirror plan

1. Open Toolkit.
2. On the Main Menu, click on the [Mirror](#) activity.
3. On the Mirror screen, click [Edit plan](#).
4. Select a new location for the Mirror folder on your computer.
5. Click [Create](#).

The new Mirror folder is now synced with the Mirror folder on your storage device.



When Toolkit creates the new Mirror folder, it does not delete the previous folder. The previous folder is no longer synced with your storage device and can be deleted.

Delete a mirror plan

1. Open Toolkit.
2. On the Main Menu, click on the [Mirror](#) activity.
3. On the Mirror screen, click [Delete plan](#).
4. Click [Delete](#) to confirm.



Toolkit deletes the mirror plan but does not remove the Mirror folder on your computer or your storage device. The contents of the folders are also preserved.

View report

You can review a report of mirror activity. The report lists files that were not synced, and includes details on the cause as well as file paths on the host computer and backup drive.

1. Open Toolkit.
2. On the Main Menu, click on the [Mirror](#) activity.
3. On the Mirror screen, click [View report](#).

Previous Toolkit versions (Windows 7 | 8 | 8.1)

In legacy versions of Toolkit, [Pause/Resume](#), [Edit](#), [Delete](#), and [Report](#) actions are accessed through a menu on the Mirror screen:

1. Open Toolkit.
2. On the Main Menu, click on the [Mirror](#) activity.
3. On the Mirror screen, click on the More icon ([...](#)).
4. Select an action.

Toolkit Mirror FAQ

Click [Toolkit Mirror FAQ](#) for answers to common questions about creating and using mirror folders.

Backup Activity (Windows Only)

The Backup activity lets you create a plan customized for the content, storage device, and schedule of your choosing. Backup is available for the Windows version of Toolkit.



The instructions provided here are intended for users with the most recent version of Toolkit. The user interface for earlier versions of toolkit may differ slightly. See [Previous Toolkit versions \(Windows 7 | 8 | 8.1\)](#).

File types and procedure

Toolkit backs up your data but excludes program files, application data, temporary files, and other types of system files and folders.



For more details, click on [File paths and extensions excluded in Toolkit backup](#).

Toolkit initially saves a full backup of the selected data to your storage device when a Backup plan is created. With successive backups, Seagate only saves the data that has changed since the preceding backup. This helps reduce the time and space required for each scheduled backup.

Locating backed up files

When Toolkit backs up files to your external storage device, it creates the following folder hierarchy on the drive:

`X:\Toolkit\Backup\Name\c\`



X indicates the drive letter assigned to your external drive by your computer. Your drive letter may be different and may change depending on the number of drives connected to your computer. **Name** is the name of your computer.

Within the `\Toolkit\Backup\Name\c\` folder, your backed up files are typically in a copy of the source user folder, however, this may vary depending on the settings you chose for the Backup plan.

Viewing archived files

When you update files on your computer, your Backup plan will copy the previous version to the following archive folder:

`X:\Toolkit\Backup\Name\C_Archive\`



X indicates the drive letter assigned to your external drive by your computer. Your drive letter may be different and may change depending on the number of drives connected to your computer. **Name** is the name of your computer.

Set up a quick backup

You can quickly back up personal files with just a few clicks. Your personal files include all non-system files on Windows.

1. Open Toolkit.
2. On the Main Menu, click [Backup](#).
3. Click [Back Up Now](#).



[Back Up Now](#) is not an available option if you've already created a Backup plan.

Toolkit backs up your personal files and creates a new backup plan. The plan is set to continuously back up personal files to the storage device whenever files are added to your computer or changed. You can change details of the auto-generated plan—see [Edit a backup plan](#).

Create a custom backup plan

A custom Backup plan lets you choose the content, device, and schedule for your backups.

1. Open Toolkit.
2. On the Main Menu, click on the [Backup](#) activity.
3. Click [Custom](#).
4. Proceed through the steps in [Define your Backup plan](#).

Define your backup plan

Toolkit guides you through the steps needed to define your Backup plan.

Step 1: Select content

There are two ways to select the content to include in your backups: Basic and Advanced.

Basic

1. Click the checkboxes to include the following non-system content:

All files	Windows root drive
Personal files	User folder
Documents	Documents library
Music	Music library
Pictures	Pictures library
Videos	Videos library

2. When you're finished selecting content, click [Next](#).

Advanced

1. To select content with greater control, click [Advanced](#).
2. Use the sidebar and the content window to manually select folders.

Selecting multiple items

You can select (highlight) multiple items using the **Shift** or **Ctrl** key on your keyboard.

To select a series of items in a list:

1. Click on the first folder.
2. Hold down the **Shift** key on your keyboard.
3. Click on the last folder.

To select multiple, non-consecutive items anywhere on the computer:

1. Click on a folder.
2. Hold down the **Ctrl** key on your keyboard.
3. Continue to click on folders.

When you're finished selecting content, click [Next](#).

Step 2: Select the destination drive

1. Click the destination drive for your backup.
2. Once you've selected a device, click [Next](#).

Step 3: Schedule backups

1. Click on a time period to select how often you want to back up your content.
2. Adjust settings for the selected time period, for example, selecting a specific hour or day.
3. Click [Start Backup](#).

Your changes are saved. Toolkit backs up selected folders at the scheduled time when:

- Your PC is on.
- Your storage device is connected to the PC.
- Toolkit is running.



A continuous backup plan saves a file whenever you add or remove content or update a file. While continuous backups provide greater flexibility to restore specific data, it uses more system resources.

Pause/resume a backup plan

To pause the backup plan:

1. Open Toolkit.
2. On the Main Menu, click on the Pause icon on the [Backup](#) activity.

Alternatively, you can click on the [Backup](#) activity to go to the Backup screen, and then click [Pause](#).

To resume the backup plan:

1. Open Toolkit.
2. On the Main Menu, click on the Play icon on the [Backup](#) activity.

Alternatively, you can click on the [Backup](#) activity to go to the Backup screen, and then click [Resume](#).

Edit a backup plan

You can change the content, destination, and schedule of your Backup plan.

1. Open Toolkit.

2. On the Main Menu, click on the [Backup](#) activity.
3. On the Backup screen, click [Edit plan](#).
4. Proceed through the steps in [Define your Backup plan](#).

Delete a backup plan

1. Open Toolkit.
2. On the Main Menu, click on the [Backup](#) activity.
3. On the Backup screen, click [Delete plan](#).
4. (optional) If you want to remove all files that have been backed up to the device, select the checkbox next to [Delete all files backed up to the device](#).
5. Click [Delete](#) to confirm.

View report

You can review a report of backup activity. The report lists files that were not backed up or only partially backed up, and includes details on the cause as well as file paths on the host computer and backup drive.

1. Open Toolkit.
2. On the Main Menu, click on the [Backup](#) activity.
3. On the Backup screen, click [View report](#).

Previous Toolkit versions (Windows 7 | 8 | 8.1)

In legacy versions of Toolkit, [Pause/Resume](#), [Edit](#), [Delete](#), and [Report](#) actions are accessed through a menu on the Backup screen:

1. Open Toolkit.
2. On the Main Menu, click on the [Backup](#) activity.
3. On the Backup screen, click on the More icon ([...](#)).
4. Select an action.

Toolkit Backup FAQ

Click [Toolkit Backup FAQ](#) for answers to common questions about creating and using Backup plans.

Restore Activity (Windows Only)

You can retrieve files that you have backed up to your external drive through the Toolkit Backup plan.

1. Open Toolkit.
2. On the Main Menu, click [Restore](#).
3. Select the Backup plan you want to restore.
4. On the Restore screen, select the version you want to restore. Click [Next](#).
5. By default, Toolkit will restore files to their original locations. (If you want to restore files to a different location, use the sidebar and the content window to select a folder. You can always click [Restore to Original Location](#) to reset to the default location.)
6. Click [Restore](#).

Toolkit will restore the files from the version you selected. It will not restore files from other versions that may have been backed up to your external drive.



Restoring files to other folders or computers

When restoring files to a different folder or computer, the file structure in the destination location may not match the file structure in the source location. Toolkit will recreate the source folder structure in the new location if file paths don't match. Depending on how your folders are organized, you may need to manually move restored files to their appropriate destinations.

Sync Plus Activity

The Sync Plus activity provides a continual sync of data between your computer and your drive, ensuring your files are available in both places.

Stay in sync Sync folders on your PC or Mac with folders on your drive. Whenever you add, edit, or delete files on one device, Sync Plus automatically updates the files on the other.

Archive deleted files Automatically copy files you've deleted to the archive folder on your drive.



Toolkit will not sync some types of data. See [Files and folders excluded from syncing](#).

Sync Plus is available for the following premium products:

Supported devices	Product support page	User manual
LaCie 1big Dock	Product	Documentation
LaCie 1big Dock SSD Pro	Product	Documentation
LaCie Rugged SSD Pro	Product	Documentation
Seagate Barracuda Fast SSD	Product	Documentation
Seagate FireCuda Gaming SSD	Product	Documentation
Seagate One Touch SSD	Product	Documentation
Seagate Ultra Touch SSD	Product	Documentation



The instructions provided here are intended for users with the most recent version of Toolkit. The user interface for earlier versions of toolkit may differ slightly. See [Previous Toolkit versions \(Windows 7 | 8 | 8.1\)](#).

Set up a quick sync

You can quickly create a plan to sync your PC or Mac's user folder. Toolkit performs the following actions in a quick sync:

- Creates a default plan syncing your PC or Mac's user folder with your drive.
- Files and folders you delete are automatically copied to the archive folder on the drive.

To create a quick sync:

1. Open Toolkit.
2. On the Main Menu, click on the [Sync Plus](#) activity.
3. Click [Sync](#).
4. Review settings and click [Got It](#).

Create a custom Sync Plus plan

A custom Sync Plus plan lets you:

- Choose folders to sync with your drive.
- Customize your sync and archive settings.

To set up your custom Sync Plus plan:

1. Open Toolkit.
2. On the Main Menu, click the [Sync Plus](#) activity.
3. On the Sync Plus screen, click [Create a new Sync Plus plan](#).
4. Click [Next](#).
5. Select the computer folders you want to sync. Click [Next](#).
6. Select the destination on your drive for the synced folder(s). Click [Next](#).
7. Click on the toggle switches to change the following settings:

Setting	On	Off
2-way sync	Changes made to files on your computer are synced with your drive, and vice versa.	<ul style="list-style-type: none">• Your drive stays synced to changes made to files on your computer. However, changes made to files on your drive are not synced to your computer.• Files deleted from your computer are not deleted from your drive.• Turning off 2-way sync disables the Archive deleted files option.

Archive deleted files

Files and folders deleted from your computer or drive are saved to the archive folder. Turning off 2-way sync disables the Archive deleted files option.

Deleted files and folders are not saved. Turning off 2-way sync disables the Archive deleted files option.

8. Click [Create](#).
9. Review settings and click [Got It](#).

Pause/resume a Sync Plus plan

To pause a Sync Plus plan:

1. Open Toolkit.
2. On the Main Menu, click on the Pause icon on the [Sync Plus](#) activity.

Alternatively, you can click on the [Sync Plus](#) activity to go to the Sync Plus screen, and then click [Pause](#).

To resume the Sync Plus plan:

1. Open Toolkit.
2. On the Main Menu, click on the Play icon on the [Sync Plus](#) activity.

Alternatively, you can click on the [Sync Plus](#) activity to go to the Sync Plus screen, and then click [Resume](#).

View synced folders and archive

You can view synced folders and archives on your computer:

1. Open Toolkit.
2. On the Main Menu, click on the [Sync Plus](#) activity.
3. On the Sync Plus screen, click [View computer folder](#).

Toolkit opens a file browser window where you can view the folders and their contents.

Edit a Sync Plus plan

To edit a Sync Plus plan:

1. Open Toolkit.
2. On the Main Menu, click the [Sync Plus](#) activity.
3. On the Sync Plus screen, click [Edit plan](#).

4. Select source and destination folders, and change sync and archive settings as needed.

Restore files

To restore files from the archive:

1. Open Toolkit.
2. On the Main Menu, click on the [Sync Plus](#) activity.
3. On the Sync Plus screen, click [Restore files](#).
4. Toolkit opens a file browsing window so you can copy data from the archive folder to another location.

Delete a Sync Plus plan

To delete a Sync Plus plan:

1. Open Toolkit.
2. On the Main Menu, click on the [Sync Plus](#) activity.
3. On the Sync Plus screen, click [Delete plan](#).
4. Click [Agree](#) to confirm.

Files and folders excluded from syncing

Toolkit will not sync program files, application data, temporary files, and other types of system files and folders. A full listing of items excluded from syncing can be found in this [knowledge base article](#).

Previous Toolkit versions (Windows 7 | 8 | 8.1)

In legacy versions of Toolkit, [Pause/Resume](#), [Edit](#), [Restore](#), and [Delete](#) actions are accessed through a menu on the Sync Plus screen:

1. Open Toolkit.
2. On the Main Menu, click on the [Sync Plus](#) activity.
3. On the Sync Plus screen, click on the More icon ([...](#)).
4. Select an action.

Seagate Secure

The Seagate Secure activity lets you manage security for Seagate and LaCie self-encrypting drives. Use Toolkit to enable security, create a password, and rest easy knowing your data is protected with AES 256-bit encryption technology.

Supported devices	Product support page	User manual
LaCie Mobile Drive Secure	Product	Documentation
LaCie Mobile SSD Secure	Product	Documentation
LaCie Rugged RAID Shuttle	Product	Documentation
LaCie Rugged Secure	Product	Documentation
LaCie Rugged SSD	Product	Documentation
Seagate Backup Plus Ultra Touch	Product	Documentation
Seagate One Touch with Hub	Product	Documentation
Seagate One Touch with Password	Product	Documentation



The instructions provided here are intended for users with the most recent version of Toolkit. The user interface for earlier versions of toolkit may differ slightly. See [Previous Toolkit versions \(Windows 7 | 8 | 8.1\)](#).

Enable security with Toolkit

Toolkit is required to enable security for self-encrypting drives.

1. Connect the device to your computer.
2. Open Toolkit.
3. On the Main Menu, click on the [Seagate Secure](#) activity.
4. Click [Enable](#).

macOS 10.13 or later



A driver needs to be installed. At the prompt, use the Finder to eject the drive, and then disconnect the cable from the computer. Toolkit will prompt you to enable a system extension. Click [Next](#) to navigate to your Security & Privacy System Preferences and enable the system extension signed by “Seagate Technologies LLC”.

Apple Silicon Mac users

You must lower security before you can enable the system extension in Security & Privacy. For more details, see [How to change startup disk security settings on an Apple silicon Mac](#).

5. A notice appears informing you that you will create a password that you must remember or keep safe, as it can't be recovered. Click the checkbox to acknowledge the notification, and then click [Next](#).
6. Enter the 8-character secure code (SID) listed on the insert that was included in your device packaging. Note that the secure code is case-sensitive, meaning that it distinguishes between upper-case and lower-case letters. Click [Next](#).



If you no longer have the insert, you can find the secure code (SID) on a sticker on the drive enclosure. **Note for LaCie Rugged Secure and Rugged RAID Shuttle drives**—the sticker is located under the protective bumper.

7. Click [Next](#).



Incorrect code error? If you receive an **Incorrect code** error and can no longer enter the secure code (SID), safely eject the hard drive and then disconnect it from the computer. Locate the correct SID, reconnect the drive, and try again. This error could also occur if you enabled security for the device at some point in the past and the password you created is still active. Try entering the last password you created for the drive.

8. Create a password that you will use to unlock the drive on any computer. In the upper field, enter a password that's easy to remember but difficult to guess. Note that the password you create is case-sensitive, meaning that it distinguishes between upper-case and lower-case letters. Enter the same password in the lower field to confirm, and click [Next](#).



Keep your password in a safe place. Similar to mobile phones, your password cannot be recovered, not even by Seagate or LaCie.

9. (optional) Create a password hint. In the event you forget your password, you can view your hint to help you remember it. Enter your password hint and click [Next](#).



Because personal details can limit data security, use a hint that only you understand.

Optional password reset key setup

You can set up a key that lets you reset your password if you forget your current password, while preserving the data on your drive.

At the prompt, enter your Seagate/LaCie account information and click [Sign In](#). If you don't have a Seagate/LaCie account, click [Create Account](#) to open a web page where you can create one. You'll need to validate and activate your new account.

After the password reset key has been created, make certain to note your Seagate/LaCie account information in case you need it to reset the password at a future date. See [Set up a password reset key](#) and [Use a password reset key](#) for more details.

10. Click [Done](#).

Unlock the drive

To access data on the drive, you must enter the password you created with the Toolkit app. You can enter your password using Toolkit. If Toolkit is not installed on the computer, you can run the appropriate Unlock Drive app for your operating system located on the drive.

Entering your password with Toolkit

Each time you connect your drive to a computer with Toolkit installed, you'll be prompted to enter your password.

1. In the dialog, enter the password you created when you enabled security.



Remember, the password you created is case-sensitive, meaning that it distinguishes between upper-case and lower-case letters.

2. Click [Unlock](#).

If the prompt doesn't appear automatically when you connect the drive:

1. Open Toolkit.
2. On the Main Menu, click on the [Seagate Secure](#) activity.

3. On the Seagate Secure screen, click [Unlock](#).
4. At the prompt, enter your password and click [Unlock](#).

Entering your password with the Unlock Drive app

If you connect the device to a computer that does not have Toolkit installed, you can enter your password using the Unlock Drive app located on the drive.

1. Using a file manager such as File Explorer or Finder, open the DriveLocked volume.
2. Click on [Unlock Drive for Windows](#) or [Unlock Drive for Mac](#).

macOS 10.13 or later



A driver needs to be installed. At the prompt, use the Finder to eject the drive, and then disconnect the cable from the computer. Toolkit will prompt you to enable a system extension. Click [Next](#) to navigate to your Security & Privacy System Preferences and enable the system extension signed by “Seagate Technologies LLC”.

Apple Silicon Mac users

You must lower security before you can enable the system extension in Security & Privacy. For more details, see [How to change startup disk security settings on an Apple silicon Mac](#).

3. Enter the password you created for the drive.



Remember, the password you created is case-sensitive, meaning that it distinguishes between upper-case and lower-case letters.

4. Click [OK](#).



The Unlocker app is not available for high-capacity (12TB and higher) versions of Seagate One Touch with Hub. The Toolkit app must be used to unlock the drive.

Exceeding the maximum number of failed password attempts

If you reach the maximum number of consecutive failed password attempts, your drive will be temporarily disabled. Disconnect and reconnect your drive, and then retry with the correct password.

Lock the drive

The drive is locked automatically whenever it is ejected or disconnected from your computer. You must enter your password again when you reconnect the drive.

You can also manually lock the drive while it's connected to a computer.

1. Open Toolkit.
2. On the Main Menu, click on the [Seagate Secure](#) activity.
3. On the Seagate Secure screen, click [Lock](#).
4. In the dialog, enter your password and click [Lock](#).



Remember, the password you created is case-sensitive, meaning that it distinguishes between upper-case and lower-case letters.

Change your password

Use Toolkit to change your password.

1. Open Toolkit.
2. On the Main Menu, click on the [Seagate Secure](#) activity.
3. On the Seagate Secure screen, click [Change Password](#).
4. A notice appears informing you that you will create a password that cannot be recovered. Click [Next](#).
5. In the upper field, enter your current password.
6. Enter your new password in the middle field, and then enter the same new password in the lower field to confirm.
7. (Optional) You can create a password hint, which you can view later in the event you've forgotten your password. Enter the password hint in the field.



Because personal details can limit data security, use a hint that only you understand.

8. Click [Next](#).
9. You've now secured the drive with a new password. Click [Done](#).

Set up a password reset key

You can set up a key that lets you reset your password if you forget your current password, while preserving the data on your drive.

Requirements

- Set up the password reset key before you forget your current password.

- A Seagate/LaCie account is required to set up a password reset key. [Create a new account](#), or [sign in with an existing account](#). An internet connection is required. New users will need to validate and activate their new account.
- Multi-user drives—Only an admin can set up and use a password reset key.
- The password key feature is available in Seagate Secure version 3.0 or higher. To view your Toolkit version:
 1. From the Home screen, click on the More menu and select [Settings](#).
 2. Click [About](#).



Important note—Like a good insurance policy, a password reset key is only useful if you set it up before you need it. If you forget your password but did not previously set up a password reset key, your only recourse is to [reset the drive to factory settings](#). A factory reset erases all data from the drive.

Password reset key setup after security is enabled

You're prompted to set up a password reset key when [enabling security for your drive](#). However, if security has already been enabled, you can set up a password reset key on the Seagate Secure screen:

1. Open Toolkit.
2. On the Main Menu, click on the [Seagate Secure](#) activity.
3. On the Seagate Secure screen, click [Reset Key](#).
4. Click [Set Up](#).
5. Enter your current Seagate Secure admin password. Click [Continue](#).
6. You're prompted to enter your PSID. This is the 32-character reset code listed on the insert that was included in your device packaging. Enter the 32-character PSID. (Toolkit will automatically change lower-case letters to upper-case.)

No longer have the insert with the PSID?

You can also find the PSID on a sticker on the hard drive. **Note for LaCie Rugged Secure and Rugged RAID Shuttle drives**—the sticker is located under the protective bumper.

7. At the prompt, enter your Seagate/LaCie account information and click [Sign In](#). An internet connection is required.



If you don't have a Seagate/LaCie account, click [Create Account](#) to open a web page where you can create an account. You'll need to validate and activate your new account.

After the password reset key has been created, make certain to note your Seagate/LaCie account information in case you need it to reset the password at a future date.

Use a password reset key

If you previously set up a password key, you can use it to reset the drive's password.

1. At the password prompt, click [Forgot password?](#)
2. You're prompted to enter your PSID. This is the 32-character reset code listed on the insert that was included in your device packaging. Enter the 32-character PSID. (Toolkit will automatically change lower-case letters to upper-case.)

No longer have the insert with the PSID?

You can also find the PSID on a sticker on the hard drive. **Note for LaCie Rugged Secure and Rugged RAID Shuttle drives**—the sticker is located under the protective bumper.

3. At the prompt, enter your Seagate/LaCie account information and click [Sign In](#). An internet connection is required.
4. On the Password Reset screen, enter your new password, and then enter the same new password in the field below it to confirm.
5. (optional) You can create a password hint, which you can view later in the event you forget your password again. Enter the password hint in the field.
6. (optional) Click the [Trusted computer](#) checkbox configure Toolkit to [automatically unlock a drive when it's connected to a trusted computer](#).
7. Click [Next](#).
8. Click [Done](#).

Trusted computers

You can configure Toolkit to automatically unlock a drive when it's connected to a computer that you've designated as "trusted". Use this setting only on a computer that no one else uses. You'll still need a password to unlock the drive when connected to other computers.

1. Connect your drive to a computer installed with Toolkit.
2. At the prompt, enter the password you created when you enabled security.



Remember, the password you created is case-sensitive, meaning that it distinguishes between upper-case and lower-case letters.

3. Check the [Trust this computer](#) checkbox.
4. Click [Continue](#).

If the prompt doesn't appear automatically when you connect the drive:

1. Open Toolkit.

2. On the Main Menu, click on the [Seagate Secure](#) activity.
3. On the Seagate Secure screen, click [Unlock](#).
4. At the prompt, enter your password.
5. Check the [Trust this computer](#) checkbox.
6. Click [Continue](#).

If your connected drive is already unlocked, do the following:

1. Open Toolkit.
2. On the Main Menu, click on the [Seagate Secure](#) activity.
3. On the Seagate Secure screen, click [Trusted Computer](#).
4. Click the [Trust this computer](#) toggle to enable the setting.
5. At the prompt, enter your password and click [Continue](#).
6. Click [Done](#).

Removing trusted computer status

To remove trusted computer status from a computer:

1. Connect your drive to the trusted computer.
2. Open Toolkit.
3. On the Main Menu, click on the [Seagate Secure](#) activity.
4. On the Seagate Secure screen, click [Trusted Computer](#).
5. Click the [Trust this computer](#) toggle to disable the setting.
6. Click [Done](#).

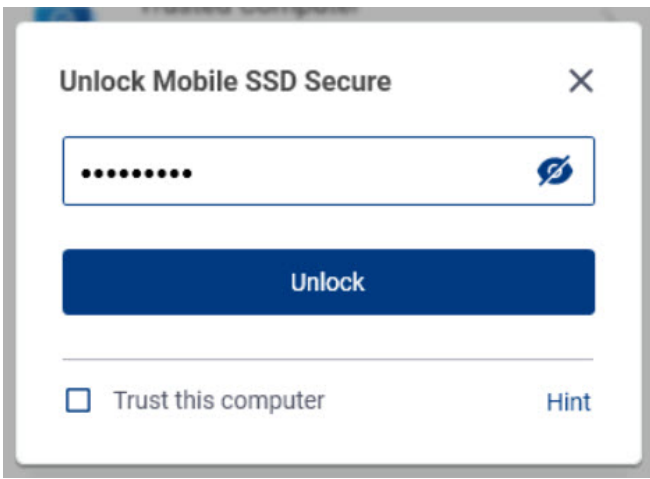
Multi-user access

You can provide a second user with secure access to your storage device.

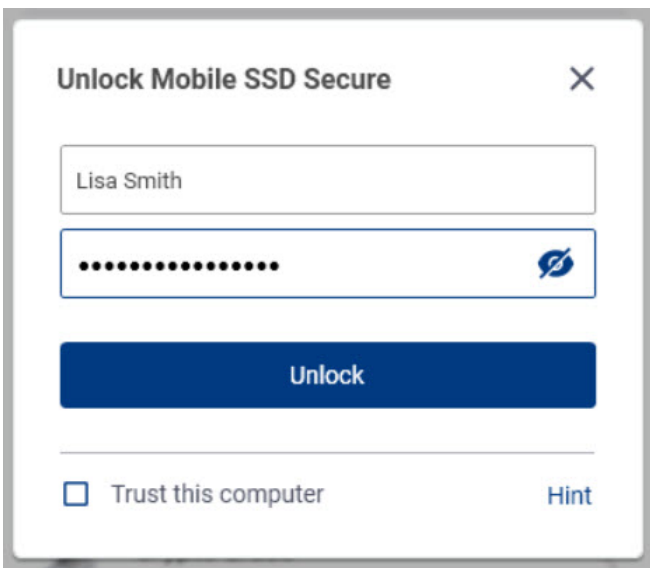


Multi-user is not available for high-capacity (12TB and higher) versions of Seagate One Touch with Hub.

Adding another user changes the unlock prompt when connecting the secure drive to a computer. When only a single user is enabled, the secure drive requires a single password for the owner or 'admin' of the drive:



With multi-user enabled, the user unlocking the drive must enter both their username and password.



As the owner of the secure drive, your username is "Admin" and you continue to enter the same password. You'll provide the second user with a username and an initial password. The second user can access content on the drive but cannot perform all security actions:

Secure Actions	Admin	User
Change Password	✓	✓
Password Reset Key	✓	✗
Disable Security	✓	✗
Trusted Computer	✓	✓
Manage Multi-User	✓	✗
Crypto-Erase	✓	✗

1. Open Toolkit.
2. On the Main Menu, click on the [Seagate Secure](#) activity.
3. On the Seagate Secure screen, click [Manage Multi-User](#).
4. Click the [Multi-user](#) radio button, and then click [Next](#).
5. You're prompted to confirm your administrator password. Enter your password and click [Next](#).
6. Click [Add User](#). A dialog box appears.
7. Enter a username for the second user. This is the username the second user will enter when unlocking the drive.
8. Enter a password for the second user. This is the password the second user will enter when unlocking the drive. Choose a password that's easy to remember but difficult to guess. Note that the password you create is case-sensitive, meaning that it distinguishes between upper-case and lower-case letters.
9. Enter the same password in the lower field to confirm.
10. (optional) Create a password hint. You can create a hint to help you remember the password you created for the second user.



Because personal details can limit data security, use a hint that only you understand.

11. Click [Save](#).

Editing the second user

The administrator can edit the second user's username and password.

1. Open Toolkit.
2. On the Main Menu, click on the [Seagate Secure](#) activity.
3. On the Seagate Secure screen, click [Manage Multi-User](#).
4. At the prompt, enter your admin password and click [Continue](#).
5. In the user listing, click on the More icon ([...](#)) and select [Edit](#).
6. Edit the user's details and click [Save](#).
7. Click [Done](#).

Disabling the second user

The administrator can disable the second user but maintain their details so they can be re-enabled later.

1. Open Toolkit.
2. On the Main Menu, click on the [Seagate Secure](#) activity.
3. On the Seagate Secure screen, click [Manage Multi-User](#).
4. At the prompt, enter your admin password and click [Continue](#).
5. In the user listing, click on the More icon ([...](#)) and select [Disable](#).

6. At the prompt, click [Disable](#) to confirm.
7. Click [Done](#).

Deleting the second user

The administrator can delete the second user.

1. Open Toolkit.
2. On the Main Menu, click on the [Seagate Secure](#) activity.
3. On the Seagate Secure screen, click [Manage Multi-User](#).
4. In the user listing, click on the More icon ([...](#)) and select [Delete](#).
5. At the prompt, click [Delete](#) to confirm.
6. Click [Done](#).

Disable security

If you disabled security at some point, you can re-enable it using the password you created.

1. Open Toolkit.
2. On the Main Menu, click the [Seagate Secure](#) activity.
3. On the Seagate Secure screen, click [Enable Security](#).
4. Enter the password you created when you first enabled security.



Remember, the password you created is case-sensitive, meaning that it distinguishes between upper-case and lower-case letters.

5. Click [Continue](#).

Re-enable security

If you disabled security at some point, you can re-enable it using the password you created.

1. Open Toolkit.
2. On the Main Menu, click the [Seagate Secure](#) activity.
3. On the Seagate Secure screen, click [Enable Security](#).
4. Enter the password you created when you first enabled security.



Remember, the password you created is case-sensitive, meaning that it distinguishes between upper-case and lower-case letters.

5. Click [Continue](#).

Crypto-erase the drive

A crypto-erase securely deletes all data on the drive—it can never be recovered—while keeping your security settings in place. Your password remains the same.

1. Open Toolkit.
2. On the Main Menu, click on the [Seagate Secure](#) activity.
3. Click the Seagate Secure screen, click [Crypto Erase](#).
4. A notification appears informing you that you will erase all the data on the drive but maintain your security settings. Click [Erase](#).
5. A dialog box appears. Enter your password to confirm, and then click [Continue](#).



If you are logged in to your computer as an admin user, confirm that you want to allow Toolkit to make this change. If you are logged in as a standard user, enter the system password for your computer to confirm the crypto-erase.



Your system prompts you to allow Toolkit to make this change. Enter the system password for your computer to confirm the crypto-erase.

Reset the drive to factory settings

A factory reset deletes all data on the drive and removes all security settings, including your password. The drive reverts to its original factory settings.

1. Open Toolkit.
2. On the Main Menu, click on the [Seagate Secure](#) activity.
3. On the Seagate Secure screen, click [Factory Reset](#).
4. A notification appears informing you that you will erase all the data on the drive and remove your security settings. Click [Reset](#).
5. You're prompted to enter your PSID. This is the 32-character reset code listed on the insert that was included in your device packaging. Enter the 32-character PSID. (Toolkit will automatically change lower-case letters to upper-case.)

No longer have the insert with the PSID?

You can also find the PSID on a sticker on the hard drive. **Note for LaCie Rugged Secure and Rugged RAID Shuttle drives**—the sticker is located under the protective bumper.

6. Click [Continue](#).



If you are logged in to your computer as an admin user, confirm that you want to allow Toolkit to make this change. If you are logged in as a standard user, enter the system password for your computer to confirm the factory reset.



Your system prompts you to allow Toolkit to make this change. Enter the system password for your computer to confirm the factory reset.

Previous Toolkit versions (Windows 7 | 8 | 8.1)

In legacy versions of Toolkit, all security-related actions are accessed through a menu on the Seagate Secure screen:

1. Open Toolkit.
2. On the Main Menu, click on the [Seagate Secure](#) activity.
3. On the Seagate Secure screen, click on the More icon (**...**).
4. Select an action.

RAID Setup

Toolkit helps you easily configure the RAID level and formatting for compatible drives.

Supported devices	Product support page	User manual
LaCie 2big Dock	Product	Documentation
LaCie 2big RAID	Product	Documentation
LaCie Rugged RAID Pro	Product	Documentation
LaCie Rugged RAID Shuttle	Product	Documentation

RAID explained

RAID stands for **redundant array of independent disks**. RAID contains the word **array**, and the two terms are often used interchangeably. An array is a combination of two or more physical disks that are presented to the operating system as a single volume.

Disks are combined into different RAID configurations known as **RAID levels**. The RAID level you choose depends on which storage attributes are most important to you:

Capacity	The total amount of data you can store
Performance	The speed at which data is copied
Protection	The number of disks that can fail before data is lost

Toolkit RAID helps you configure compatible LaCie and Seagate RAID storage devices with two drives. Available levels are RAID 0 and RAID 1:

RAID 0—Data is not duplicated on both drives. This results in faster transfers and more storage, since the full capacity of both drives can be used to store unique data. However, RAID 0 lacks data protection. If a single drive fails, all data in the array is lost.

RAID 1—Data is duplicated on each disk in the array. If a drive fails, the data remains available on the other drive. However, this comes at a cost—since the same data is written to each drive, copying data takes longer and overall storage capacity is reduced by 50%. RAID 1 is a good choice when protecting your data is more important than performance or overall storage space.

To summarize, each RAID level has its own advantages:

RAID level	Capacity	Performance	Protection	Factory default
RAID 0	100%	Excellent	None	Yes
RAID 1	50%	Good	Excellent	No

RAID and data security

While RAID 1 can protect data in case of a single drive failure, it cannot guarantee complete data protection for all cases of hardware failure or data corruption. To help prevent data loss due to any extreme event, it's recommended that you maintain copies of your files on more than one device—for example, keep one copy on your RAID device and another copy on one of the following:

- Another direct-attached storage (DAS) device
- A network attached storage (NAS) device
- Some form of removable or archival storage

Any loss, corruption or destruction of data while using a Seagate or LaCie hard drive or hard drive system is the sole responsibility of the user. Under no circumstances will Seagate or LaCie be held liable for the recovery or restoration of data.

Setting RAID level and formatting with Toolkit

! **Formatting erases everything on the storage device.** It's highly recommended that you **back up all data** on your storage device before performing the steps below. Seagate and LaCie are not responsible for any data lost due to formatting, partitioning, or using a storage device.

1. Follow the instructions in your product user manual for setting up your device and installing Toolkit.
2. On the Toolkit home screen, click on the **RAID** activity.
3. Click **Set Up**.
4. Select a RAID level:

RAID 0	Configures the device as RAID 0. Full storage capacity is available for your files and your data transfers are faster. However, RAID 0 lacks an important feature: data protection. If a hard drive fails, all data in the array is lost.
---------------	---

RAID 1	Configures the device as RAID 1. Each file is stored on both drives in the array, which means your data is still available if a single drive fails. However, storage space is cut by 50% and data transfers are not as fast as RAID 0.
---------------	--

5. Click **Continue**.

6. Select one of the following formats for the drive:

Mac users

Windows and macOS Compatibility

Formats the drive in exFAT. Your device can be used with both macOS and Windows. However, transfer rates are not optimized for either operating system.

macOS Performance

Formats the drive in HFS+. Your device is optimized for macOS, resulting in better transfer rates. However, compatibility with Windows would require a third-party utility.

Windows users

Windows and macOS Compatibility

Formats the drive in exFAT. Your device can be used with both macOS and Windows. However, transfer rates are not optimized for either operating system.

Windows Performance

Formats the drive in NTFS. Your device is optimized for Windows, resulting in better transfer rates. However, compatibility with macOS would require a third-party utility.

7. Follow the onscreen prompts to complete the process.

RGB and Status LED Management

Toolkit has options for managing the RGB and Status LED illumination on applicable storage devices.

Pattern RGB

Choose from preset patterns or create custom patterns of your own. Select colors that complement your work or play environment.

Status LED

Enable/disable status LED.

Storage device RGB and LED options:

Supported devices	Status LED	Single Color RGB	Rainbow RGB	Product support	User manual
LaCie 1big Dock	Yes	No	No	Product	Documentation
LaCie 1big Dock SSD Pro	Yes	No	No	Product	Documentation
LaCie 2big RAID	Yes	No	No	Product	Documentation
Seagate FireCuda Gaming Dock	Yes	Yes	No	Product	Documentation
Seagate FireCuda Gaming Hard Drive	Yes	Yes	Yes	Product	Documentation
Seagate FireCuda Gaming Hub	Yes	Yes	Yes	Product	Documentation
Seagate FireCuda Gaming SSD	Yes	Yes	No	Product	Documentation



Game Drive for Xbox—Toolkit RGB control can be used to set color patterns and animations for select products. See the [Game Drive for Xbox Special Edition user manual](#) for instructions specific to your product.

Disable/enable the status LED

The status LED is enabled by default. To disable or enable the status LED for your storage device:

1. Open Toolkit

1. Open Toolkit.
2. On the Main Menu, click the [RGB](#) or [LED](#) activity.
3. On the RGB Settings or LED Settings screen, click the [Status LED](#) toggle switch.

Edit RGB illumination patterns

The Toolkit RGB activity supports the following RGB pattern controls:

- Razer Chroma
- FireCuda RGB (default)

A single device can use only one color management option.

Access RGB activity

To access the RGB activity:

1. Open Toolkit.
2. On the Main Menu, click on the [RGB](#) activity.
3. The RGB Settings screen appears.

RGB illumination settings

The following settings at the top of the RGB activity screen apply to all RGB pattern controls

- **Intensity**—Move the slider to the right to add more brightness to the RGB and to the left to decrease brightness.
- **On**—Click the switch to turn the RGB off/on.
- **Sync Seagate compatible devices**—This option is only available for Seagate FireCuda Gaming Dock and Seagate FireCuda Gaming SSD. If you have two or more compatible devices connected to your PC, you can click the switch to sync the RGB patterns for all devices. Once enabled on any of the connected RGB storage devices, all RGBs act in unison with changes to the patterns. (There is no primary or secondary device. The most recently edited setting defines the pattern for all of the synced devices.) Disabling this option reverts all devices to their default color.

Razer Chroma via Razer Synapse 3 app (Windows only)

Razer Chroma is a popular RGB video game software management protocol with a rich set of pattern and in-game options. All management is performed in the Razer Synapse application. You can use Razer Synapse for preconfigured RGB patterns or create new ones. Razer Synapse also supports a growing number video games for RGB illumination that activates with colors matching in-game play. For further information about supported patterns and games as well as how to download the Razer Synapse application, go to the [Razer Synapse website](#).

Requirements for Razer Chroma

- The latest version of Toolkit.
- Razer Synapse 3 software must be installed and running.
- Chroma Connect must be enabled in Razer Synapse 3.



Important—Toolkit RGB control is compatible with Razer Synapse 3 or higher. Razer Synapse 2 cannot control Seagate RGB storage device LEDs.

Use Razer Chroma

To use Razer Chroma as the RGB controller, click **Enable** on the Razer Chroma activity card.


FireCuda RGB app

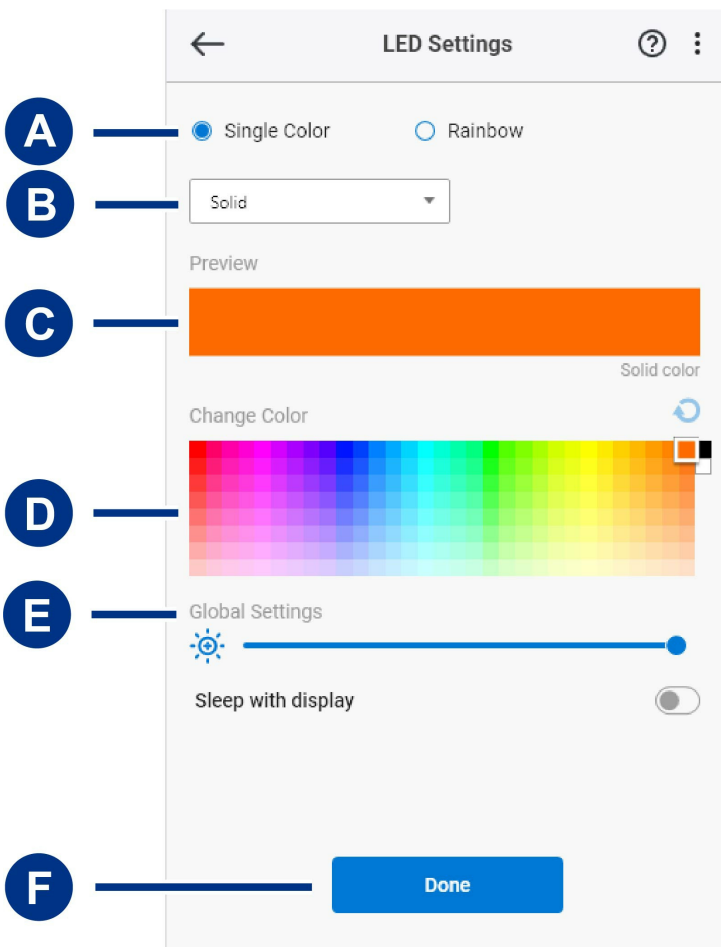
FireCuda RGB is the native Toolkit RGB management protocol. It is enabled by default.

Edit LED settings

The LED settings let you:

- Choose between single color and rainbow patterns.
- Select preset and custom animations.
- Change color and animation settings.
- Change global settings.

To edit LED settings, click on the Edit icon () on the FireCuda RGB activity. The LED Settings screen appears:



- A. [Select Pattern](#)— Choose whether to create a single color or rainbow pattern. Single color uses the entirety of the LEDs to display one color at a time as the pattern animates. Rainbow includes up to six colors on the LEDs at a time as the pattern animates. Rainbow is not available for all drives (see the [product listing](#) above).
- B. [Select Animation](#)— Choose animation types for the selected pattern.
- C. [Preview](#)—Preview the current pattern/animation. Specify animation times.
- D. [Change Color](#)—Add/remove colors for applicable animation.
- E. [Global Settings](#)—Change global settings.
- F. [Done](#)—Confirm changes to pattern/animation settings.

Select a pattern

Choose a single color or rainbow pattern. See the table below for the color and timing controls available for each animation.

Select an animation

Select from the following animation types:

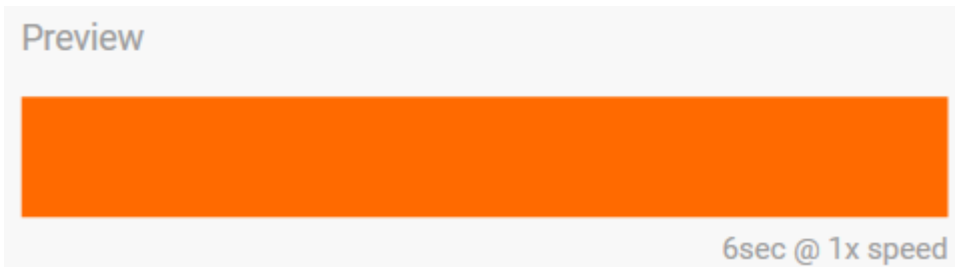
Pattern	Animation	Description	Total animation time	User selections
---------	-----------	-------------	----------------------	-----------------

Single Color	Solid	Displays a single color continuously.	<ul style="list-style-type: none"> • 100% color hold 	<ul style="list-style-type: none"> • Single color
Single Color	Blink	Turns a single color of your choosing on/off.	<ul style="list-style-type: none"> • 6s <ul style="list-style-type: none"> ◦ 50% color hold ◦ 50% off 	<ul style="list-style-type: none"> • Single color
Single Color	Breathe	Fades a single color of your choosing on/off.	<ul style="list-style-type: none"> • User selected (default=6s) <ul style="list-style-type: none"> ◦ 25% color hold ◦ 25% fade off ◦ 25% off ◦ 25% fade on 	<ul style="list-style-type: none"> • Single color • Total animation time
Single Single	Spectrum	Transitions between six colors: red, orange, yellow, green, blue, and violet.	<ul style="list-style-type: none"> • User selected (default=18s) <ul style="list-style-type: none"> ◦ 50% color holds (8.33% per color) ◦ 50% color transitions (8.33% per transition) 	<ul style="list-style-type: none"> • Total animation time
Single Color	Custom 1	Displays a custom animation you've created.	<ul style="list-style-type: none"> • User selected (default=6s) 	<ul style="list-style-type: none"> • Multiple colors • Color hold time • Color transition time
Single Color	Custom 2	Displays a custom animation you've created.	<ul style="list-style-type: none"> • User selected (default=21s) 	<ul style="list-style-type: none"> • Multiple colors • Color hold time • Color transition time
Single Color	Custom 3	Displays a custom animation you've created.	<ul style="list-style-type: none"> • User selected (default=2s) 	<ul style="list-style-type: none"> • Multiple colors • Color hold time • Color transition time
Rainbow	Static	Displays a rainbow pattern continuously.	<ul style="list-style-type: none"> • 100% color hold 	<ul style="list-style-type: none"> • N/A
Rainbow	Breathe	Fades a rainbow pattern on/off.	<ul style="list-style-type: none"> • 6s <ul style="list-style-type: none"> ◦ 50% color hold 	<ul style="list-style-type: none"> • N/A
Rainbow	Blink	Turns a rainbow pattern on/off.	<ul style="list-style-type: none"> • 6s <ul style="list-style-type: none"> ◦ 25% color hold ◦ 25% fade off ◦ 25% off ◦ 25% fade on 	<ul style="list-style-type: none"> • N/A

Rainbow	Slide	A rainbow pattern slides from right to left.	<ul style="list-style-type: none"> • 1.8s 	<ul style="list-style-type: none"> • N/A
Rainbow	Custom 1	Displays a custom rainbow pattern continuously (static).	<ul style="list-style-type: none"> • 100% color hold 	<ul style="list-style-type: none"> • Multiple colors
Rainbow	Custom 2	Fades a custom rainbow pattern on/off (breathe).	<ul style="list-style-type: none"> • User selected (default = 6s) 	<ul style="list-style-type: none"> • Multiple colors • Color hold time • Color transition time
Rainbow	Custom 3	Turns a custom rainbow pattern on/off (blink).	<ul style="list-style-type: none"> • User selected (default = 3s) 	<ul style="list-style-type: none"> • Multiple colors • Color hold time

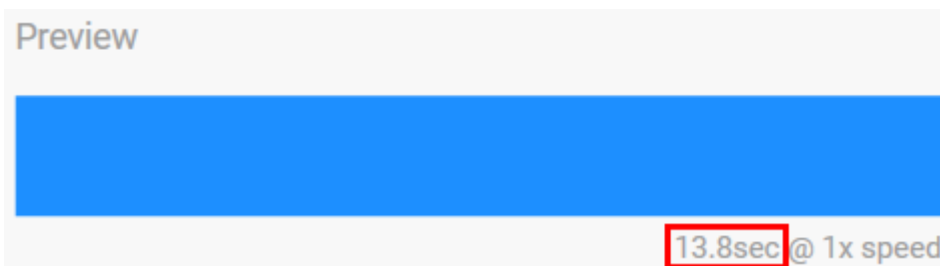
Preview selected pattern/animation

The Preview window lets you view the colors, transitions, and timing of the selected pattern/animation.

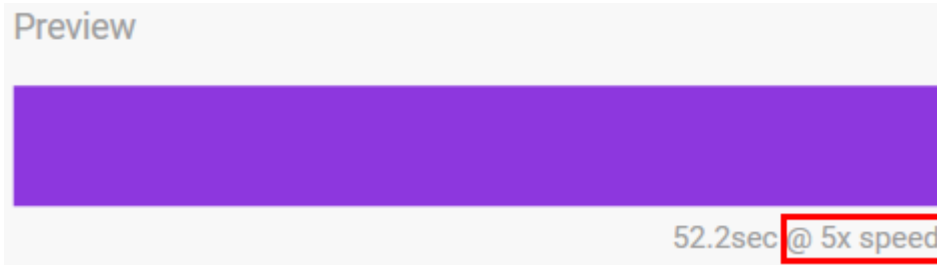


The device LEDs mimic the preview while you're editing.

The total animation time (the time it takes for one cycle of the pattern to be completed) appears below the Preview window:



For longer total animation times (starting at 15 seconds), the Preview window will automatically speed up the playback animation so that you can see your changes faster. The current playback speed is displayed next to the total animation time.



Timing controls

Some patterns/animations allow you to control the total time over which an animation is played. Use the slider to set the total animation time:



The total animation time is broken down evenly between color holds and transitions.

Certain custom pattern/animations provide control over color hold and/or transition settings:

- A. **Color hold setting**—Represents the total time spent holding on colors. The total time is divided by the number of colors in the animation.
- B. **Color transition setting**—Represents the total time spent transitioning from one color to the next color. The total time is divided by the number of transitions in the animation.

Use the sliders to control color hold and transition times:

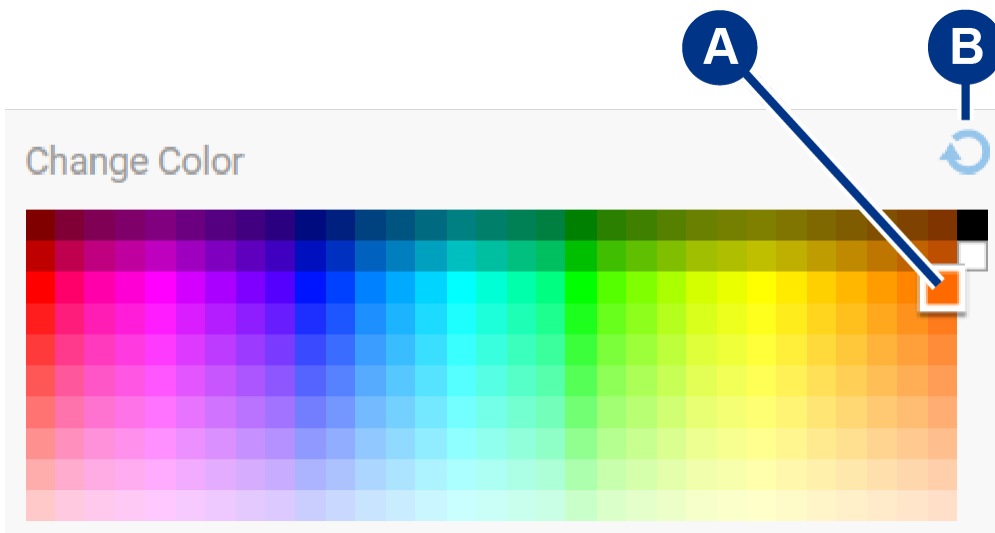


Note that the color hold setting and color transition setting together determine the total animation time.

Change colors

Single color preset animations

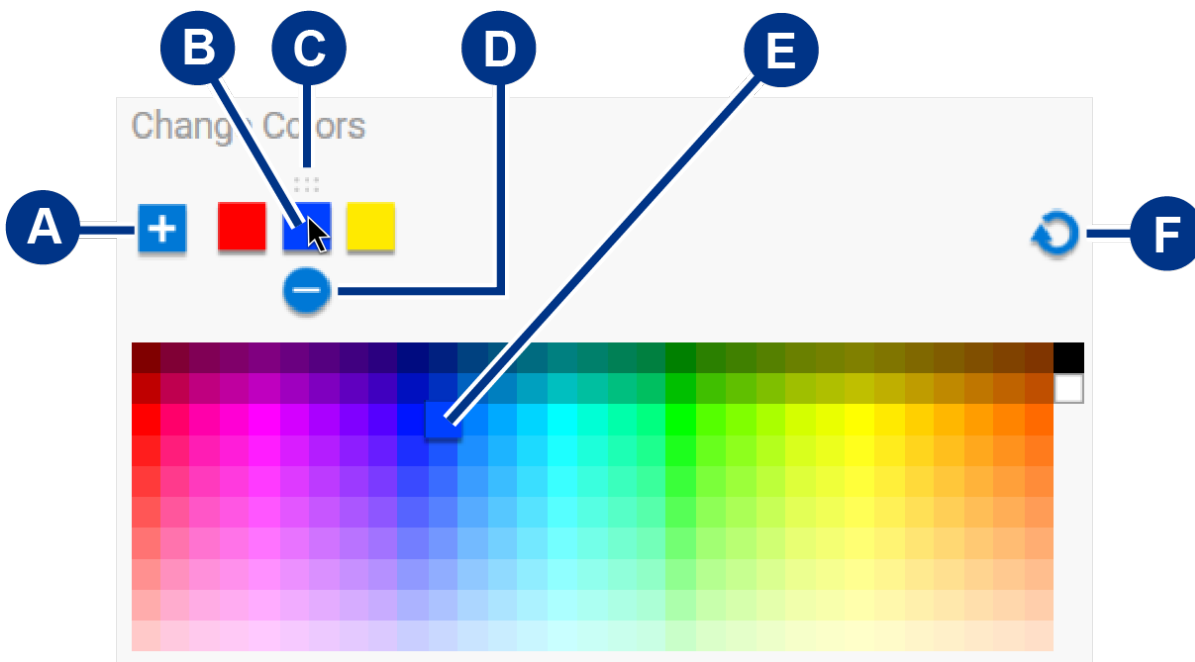
Solid, Blink, and Breathe animations allow you to specify only one color:



- A. Click on a color to select it.
- B. Click on the Reset icon to select the default orange color.

Single color and rainbow custom animations

Both single color and rainbow custom animations allow you to specify multiple colors:



- A. Click on the Add icon to add a color to the sequence. You can add up to six colors. (Only available for single color custom animations. Rainbow custom animations always require six colors.)
- B. Click to select a color in the sequence.
- C. Click on the Grid icon to drag the selected color to a different position in the sequence.
- D. Click on the Remove icon to remove the selected color from the sequence. (Only available for single color custom animations. Rainbow custom animations always require six colors.)
- E. Click to change the selected color.
- F. Click on the Reset icon to select the default colors and settings for the custom animation.

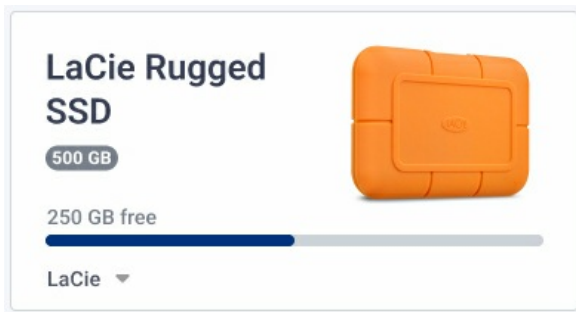
Change global settings

Use the following settings to control your storage device's pattern LED:

Setting	Description
Brightness	Move the slider to control pattern LED brightness. The default setting is 100%.
Always on	When enabled, the pattern LED is illuminated whenever the storage device is powered on. Enabling Always on disables Sleep with display .
Sleep with display	When enabled, the pattern LED is not illuminated when the host computer is asleep or powered off. Enabling Sleep with display disables Always on .

Drive Status

When the drive is in a normal healthy state, Toolkit displays the remaining capacity above the capacity bar on the Home screen.



Drive failed

A **Drive failed** status indicates at least one readable/writeable volume has less than 100 MB of free space, or has been marked as full due to a failed write.

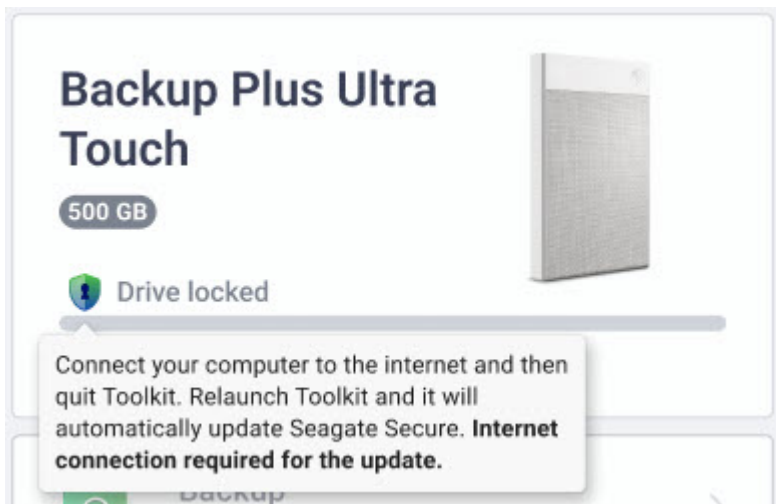
Drive full

A **Drive full** status is displayed when there is not enough available storage capacity to complete a Backup, Mirror, Sync Plus, or Import activity.

Drive locked

If Seagate Secure has been enabled for a drive and the drive is currently locked, a **Drive locked** status is displayed above the capacity bar. Unlock the drive in order to access the drive.

In rare situations, the drive may be locked but Toolkit needs to update Seagate Secure before it can unlock the drive.



In this situation, quit Toolkit and make sure your computer has access to the internet. Relaunch Toolkit and it will automatically update Seagate Secure.

Drive unlocked

If Seagate Secure has been enabled for a drive and the drive is currently unlocked, a shield icon is displayed next to the available capacity.



No readable volumes

The operating system can't read the drive's format or lacks permissions to read the drive. Common reasons for a **No readable volumes** status include:

- **Windows computer and drive formatted for Mac**—You have a Windows computer but the drive is formatted for Mac (HFS+ or APFS). Windows cannot natively read or write to drives formatted HFS+ or APFS.
- **Mac computer and drive lacks permissions**—The drive's Sharing and Permissions settings are preventing Toolkit from reading the drive.
- **Windows or Mac computer and drive is BitLocker-encrypted**—Data on the drive is protected with BitLocker encryption.

For details on troubleshooting, see the [Toolkit reports No Readable Volumes](#) knowledge base article.

Read only

Toolkit can read the drive but can't write to it, preventing activities such as Backup, Mirror, or Sync Plus.

Common reasons for a **Read only** status include:

- **Mac computer and drive formatted for Windows**—You have a Mac computer but the drive is formatted for Windows (NTFS). Macs can natively read drives formatted for NTFS, but can't write to them.
- **Mac computer's security settings**—Your Mac's Security and Privacy settings are preventing Toolkit from writing to the drive.

Security lockout

If Seagate Secure is enabled and a user enters the wrong password too many times, the drive will be temporarily disabled and a **Security lockout** status is displayed. Disconnect and then reconnect the drive to enter passwords again.

Storage pool device

A **Storage pool device** status indicates the drive volume is part of a Windows Storage Space pool, preventing Toolkit activities such as Backup, Mirror, or Sync Plus. Removing the drive from the Storage Space pool will provide Toolkit with the access needed to perform activities. See [Storage Spaces in Windows](#) for more details.

Time Machine

A **Time Machine** status is displayed if the drive has been configured as a Time Machine backup disk. Toolkit can't perform activities on drives configured for Time Machine.

Settings

To view app settings as well as support, documentation, and software information, click the More icon (**...**) on the Main Menu and select [Settings](#).

Toolkit app settings

Start Toolkit automatically at startup

When enabled, Toolkit opens automatically when the computer is started. Note that Toolkit must be open in order to run scheduled backups.

Enable Detailed Logs

When enabled, Toolkit records detailed logs that can be used to troubleshoot issues. Only enable if instructed by a Seagate or LaCie support representative.

Import settings

Import settings are only available for compatible Seagate and LaCie drives with integrated card readers or hub ports. Click on the link for a [list of supported devices](#).

Import content of inserted memory cards

When enabled, Toolkit automatically copies files from memory cards inserted in your Seagate or LaCie drive's integrated card reader.

When disabled, Toolkit will not read memory cards inserted in a card slot.

Incremental copy of inserted memory cards

When enabled, copies from memory cards are **incremental**, that is, Toolkit will only copy new files and will ignore files that were previously imported from the same memory card.

When disabled, Toolkit will copy all files from the memory card each time it is inserted in a card slot, regardless of whether files have been previously copied.

Import contents of drives connected to hub ports

When enabled, Toolkit will prompt you to copy files from USB storage devices connected to a hub port on the external drive.

When disabled, Toolkit will not prompt you to copy files from USB storage devices.

Toolkit updates

Toolkit checks for updates provided the app is open and the computer is connected to the internet. Toolkit will automatically check for updates in the following events:

- The computer restarts and Toolkit is relaunched.
- You quit Toolkit and relaunch Toolkit.
- 24-hours have elapsed since the last check.

About

Click [About](#) to view the following:

- **Toolkit app and activity versions.** When troubleshooting issues, a customer support representative may ask you for version numbers related to the Toolkit app and features.
- **Seagate and LaCie page links.**
 - Terms and Conditions
 - Privacy Statement
 - Software Legal Notices
 - End User License Agreement